

# POR DENTRO DA MRN INSIDE MRN



**MRN: 46 years  
fostering  
sustainable  
development in  
Western Pará**

**Responsible  
mining as an ally  
of environmental  
protection and  
social well-being  
in the Amazon**

MRN begins  
construction to  
implement new  
energy matrix  
Page 10

Ongoing and  
transparent  
dialogue with  
communities  
Page 30

MRN's  
reforestation is a  
benchmark in the  
Amazon  
Page 36



**Inside MRN** is our semi-annual commitment to transparency and collaboration. Here, we openly share our progress – and the challenges we face – as we build a lasting legacy of economic, social, and environmental well-being in Western Pará.

# Summary



Who We Are | **6**



MRN in Numbers | **8**



Commitment to Development | **10**



Respect for People | **24**



Respect for the Environment | **34**



## Staff

### INSIDE MRN

Issue 02/2025

Frequency: Biannual

### Editorial Board

**MRN Communications Department**

Writing, Production, and Editing  
**Máquina PR**

Graphic Design and Layout  
**Máquina PR**

Photos and Images  
**MRN Archive, Personal Archive,  
and Freepike Freepik**









## MESSAGE FROM THE BOARD OF DIRECTORS

# Our commitment: growing with the forest

As COP 30 approaches, placing Belém at the heart of global climate and development discussions, the Amazon's role as a strategic environmental asset is more prominent than ever. We are confident that the dialogue surrounding the Conference will drive concrete projects and tangible progress on climate change – a concern for all, but especially vital for those of us who live and work within the forest.

As a mining company operating in the heart of the Amazon rainforest, we understand our role and responsibility. Therefore, this second edition of INSIDE MRN takes a special look at environmental issues and initiatives that reflect our contribution to the sustainable socioeconomic development of Pará.

We are undertaking a fundamental shift in our energy matrix, constructing a 93-km transmission line. This initiative will dramatically reduce our company's emissions, marking a pivotal new stage in our decarbonization journey.

We also continue to advance reforestation, with a program that combines science, innovation, and traditional knowledge. By combining technical rigor with community engagement, we promote large-scale environmental restoration with positive social and economic impacts.

Our commitment is unwavering: to generate value through integrated operations, characterized by transparency, open dialogue, and profound environmental responsibility. Especially now, we are intensely focused on combating the climate crisis, continually improving our processes, and leveraging resources and science to preserve the forest for both current and future generations.

We believe and demonstrate through our actions that mining and forestry can coexist in harmony. It is indeed possible to responsibly extract the subsoil's riches – such as bauxite, essential for producing the aluminum vital to modern society — without compromising biodiversity protection or our deep respect for the Amazon.

**Guido Germani, CEO of MRN**

# We are Mineração Rio do Norte (MRN) and we have been present for more than four decades in Western Pará, in the heart of the Amazon.

Driven by our purpose to produce bauxite responsibly and sustainably, we supply both national and international markets.

*We are where people, environmental preservation, social responsibility, and mining converge.*

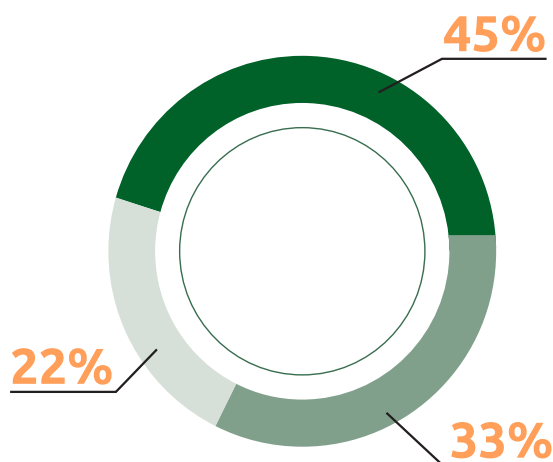
## COMMITMENT TO SUSTAINABLE PRACTICES



● GLENCORE



● RioTinto



Global voluntary sustainability initiative

**asi** Aluminium Stewardship Initiative

Integrity and compliance in your relationships



Responsible environmental management





## WHERE WE ARE

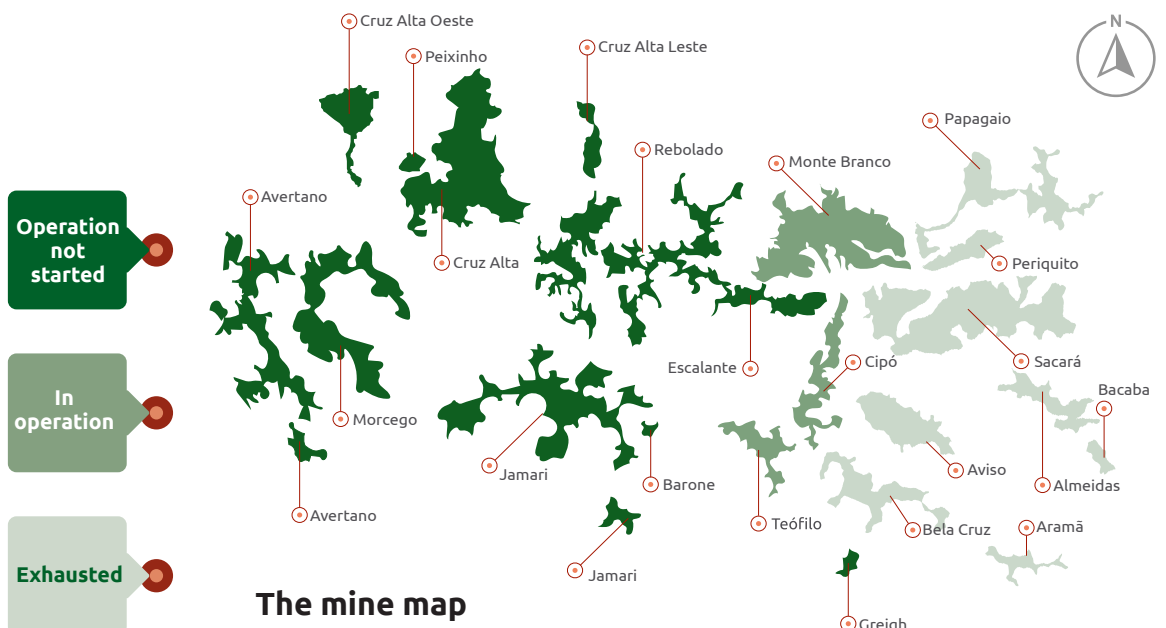
*We are located in Pará and connected to the world*

Our headquarters are located in the Porto Trombetas district of Oriximiná, in western Pará, within the Saracá-Taquera National Forest. Our operational area encompasses the municipalities of Oriximiná and Terra Santa.



## WHAT WE DO

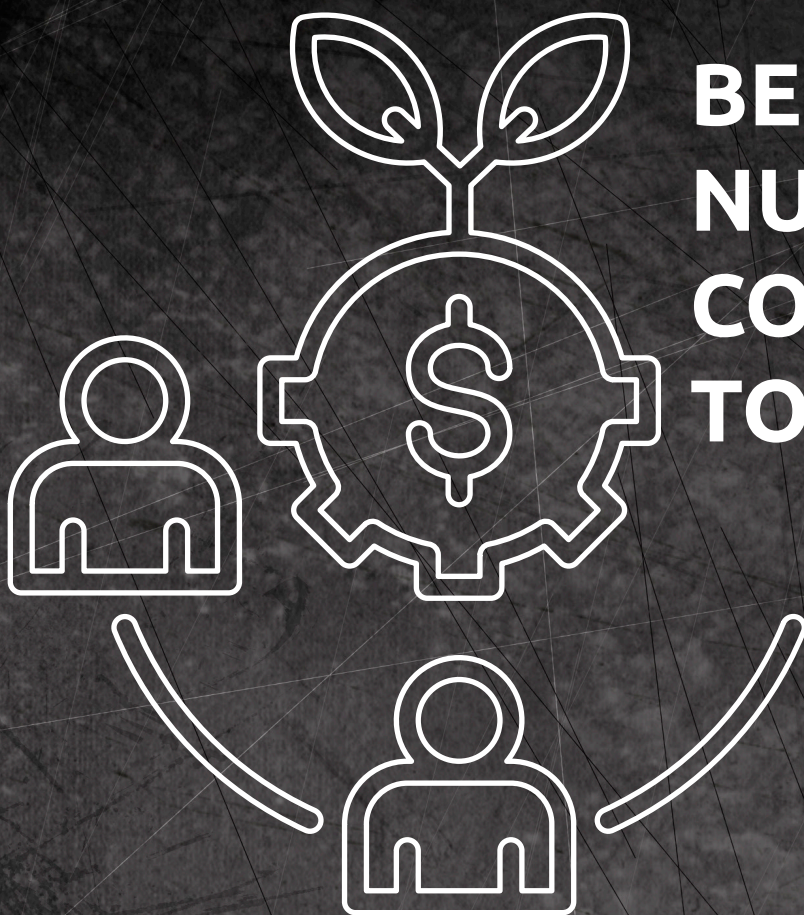
We produce bauxite, the raw material for aluminum. Our estimated production for 2025 is 11.5 million tons. Our logistics include a 28-km railway and a port for ships transporting the minerals.



### HERE BEGINS THE ALUMINUM PRODUCTION CHAIN

*Bauxite is the primary source of aluminum, used in the manufacture of electronics, household appliances, and even automobiles. MRN plays a strategic role in sustaining Brazil's leading aluminum industry, contributing over 1 million tons of aluminum annually.*





# BEHIND EVERY NUMBER, A COMMITMENT TO THE FUTURE

**46**  
years

of socioeconomic  
development in  
Western Pará

**6** million tons  
produced in the  
first half of 2025.

**3** continents  
supplied: America,  
Europe, and Asia.

**64%** of production  
destined for the  
Brazilian market.

**BRAZIL'S  
LEADING  
BAUXITE  
PRODUCER.**





JANUARY  
TO JUNE  
2025

R\$ **251.3** million  
in total  
investments



R\$ **164.8** million  
in employee  
costs



**6,956** in-house and  
outsourced  
workers



**85.4%** of in-house  
employees are from  
the state of Pará



R\$ **378.7** million  
in purchases in  
the state of Pará



R\$ **198.2** million  
in taxes, fees, and  
contributions



**60** social and  
environmental  
initiatives



R\$ **35.5** million  
in social and  
environmental  
investments



# MRN initiates construction for new energy matrix

*Transmission Line Project to expand renewable energy use and significantly reduce greenhouse gas emissions*

Construction on the first section of the Transmission Line Project (PLT), which will ensure a sustainable energy matrix for our operations, began in July 2025 in Oriximiná, Pará. The project will connect our operations to Brazil's National Interconnected Electricity System (SIN) via a 230kV transmission line.

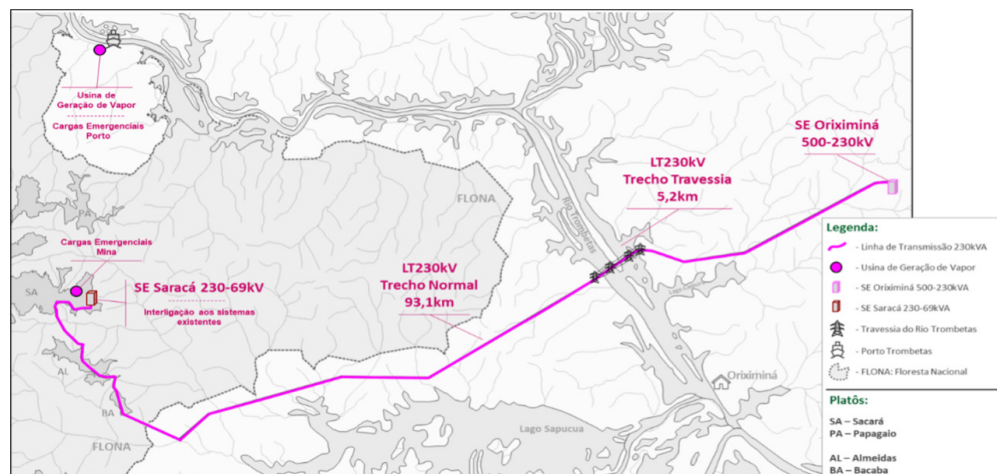
The 93-km-long new line will connect the Oriximiná power substation (SE), which will be expanded, to the Saracá substation in the Porto Trombetas district. In the second half of the year, construction will begin on the 5.2-km section crossing the Trombetas River. A total of 218 metal towers will be installed along the transmission line.

“

I learned about the mine's processes, which I had never seen before. I saw the reforestation sites and the plant species that are found here and in our area. I thought it was important, and I'll take what I learned back to my community.

*Normelia dos Santos, Xiriri Community resident, during her visit to MRN*

## PLT ROUTE





90% 

Reduction in greenhouse gas (GHG) emissions with the PLT, compared to current thermoelectric plant energy generation.

500 

Jobs to be created during the PLT construction. As of May, 100 professionals from Pará have already been hired, with 59 from Oriximiná.

## ENGAGING COMMUNITIES

We have intensified efforts to keep communities within the project's direct influence area fully informed about the PLT's progress. This includes community visits to our operations and dedicated meetings to share information and address questions about the project.

This year, the Xiriri, São João do Caipuru, Boa Nova, Saracá, Casinha, Ascensão, and Tapixaua communities participated in these engagement initiatives. We also maintain the PLT's Environmental Management Plan, approved by Ibama, which includes measures to mitigate potential impacts.





## TARGET: 25% GHG EMISSION REDUCTION BY 2027

*Energy generation initiatives intensify GHG emission reduction efforts*

In alignment with the Paris Agreement, established during the Conference of the Parties (COP21), we project a 25% reduction in greenhouse gas (GHG) emissions by 2027, while maintaining our ambition to achieve even lower net industrial emissions by 2050.

Beyond the energy matrix transition and connection to the National Interconnected Energy System, other initiatives are underway to reduce emissions from fuel combustion and solid waste and liquid effluents.

## MONITORING AND INVENTORY

We have been monitoring GHG emissions since 2015, following the GHG Protocol, a global benchmark for measuring and managing emissions. Monitoring covers all stages of the production process.

Emissions are recorded in annual inventories, audited and published. In 2024, for the sixth consecutive year, we proudly earned the “Gold Seal” from the Brazilian GHG Protocol Program.



## WHAT IS THE PBAQ?

*The Quilombola Basic Environmental Project is a document that, based on community consultation, defines actions to reduce and offset the socio-environmental impacts of projects within Quilombola territories. It is regulated by Incra Normative Instruction 111/2021 and is part of the process for obtaining an Installation License.*



## PNM: QUILOMBOLA COMMUNITY CONSULTATIONS ADVANCE

*Active listening ensures collaborative development of the Quilombola Basic Environmental Plan (PBAQ)*

As part of the licensing process for the Novas Minas Project (PNM), which will ensure the operational continuity of the MRN for another 15 years, we completed the consultation phase to develop the Basic Environmental Plan (PBAQ) for the Boa Vista Quilombola territory. In total, 28 meetings, workshops, and listening sessions were held with over 200 community members, including meetings, workshops, and listening sessions.

With the support of specialized consulting, socio-environmental, income-generation, and institutional strengthening actions were defined. The next step involves the final community consultation with the National Institute of Colonization and Agrarian Reform (INCRA).

The second half of this year will focus on developing the PBAQ for the Alto Trombetas II Quilombola territory, marking another crucial stage in the PNM licensing process.

## NEW MINES PROJECT (IF LICENSED)



**R\$ 1.9**

**billion**  
in new investments



**12.5**

**million** tons of  
bauxite annually



**6,000**

jobs sustained



# Operations boost public revenue and strengthen collections

*Taxes reinforce the budgets of municipalities in western Pará, the State and the Federal Government*

The payment of taxes, fees, and contributions has a direct impact on strengthening public finances, expanding the government's capacity to invest in essential services for the population. In the first half of 2025, our operations generated over R\$198.2 million in taxes for the State Government of Pará, the Federal Government, and the municipalities of Oriximiná and Terra Santa.

## TAX COLLECTIONS\*

# R\$ 45.3 million

paid to the State of Pará in taxes, fees, and CFEM.

*\*Data from January to June 2025.*

# R\$ 124.1 million

paid to the Federal Government in taxes, fees, contributions, and CFEM.

*Of the total collected, R\$66.7 million is retained by MRN from service providers and subsequently transferred to the Federal Government.*

## DIRECT VOLUNTARY TRANSFERS TO QUILOMBOLA COMMUNITIES

# R\$ 7.6 million

paid to the Association of Remaining Communities of Quilombo do Alto Trombetas II (ACRQAT) from 2024 to June 2025, as a Participation in the Mining Results related to exploration on the Monte Branco plateau.

## TRANSFERS TO THE QUILOMBOLA FUND

# R\$ 600 thousand

in annual donations, agreed upon with the Mãe Domingas Association. The funds are managed by community members from the territory's six communities and allocated to projects that promote cultural identity and quality of life.

## INSTITUTIONAL STRENGTHENING FUNDING

# R\$ 125 thousand

in annual donations, agreed upon with the Boa Vista Quilombo Remnant Community Association (ACRQBV). The funds are allocated to projects defined and managed by the community members of the territory.

## WHAT IS CFEM?

Financial Compensation for the Exploitation of Mineral Resources (CFEM) is a payment made by mining companies as compensation for the exploitation of mineral resources. The amount, based on the sales value, is transferred to the National Mining Agency (ANM). From there, it is distributed to the federal government and to the states and municipalities impacted by the activity.

## TRANSFERS TO MUNICIPALITIES IN THE FIRST HALF OF 2025

**Oriximiná**  
**R\$ 11.7 million**  
 ISS  
**R\$ 5.7 million**  
 CFEM  
**Total**  
**R\$ 17.4 million**

**Terra Santa**  
**R\$ 595,000**  
 ISS  
**R\$ 10.6 million**  
 CFEM  
**Total**  
**R\$ 11.1 million**

*Of the total ISS collected, **R\$12.3 million** is retained by MRN from service providers, in accordance with legislation, and subsequently passed on to municipalities.*





# Local suppliers fuel regional economic growth

*MRN-hosted meetings, business rounds, and training sessions mobilize goods and services suppliers. Purchases total R\$378.7 million*

As part of our commitment to regional economic development, in June 2025, we held a meeting in Porto Trombetas with suppliers from Santarém, Óbidos, Terra Santa, and Oriximiná, encouraging new business and partnerships.

Local purchases of materials, such as fuel, equipment, and components, exceeded R\$347.8 million in 2025 (through June). Of the 85 suppliers in Pará, 47 are from the western part of the state and accounted for over R\$301 million in purchases.

In the services sector, beyond maintaining contracts with three community cooperatives that employ over 500 people, we formalized 29 new contracts with local suppliers this year.







It's a win-win for all parties when we strengthen this bond and add value to the region. MRN and its partners receive top-tier service, and we expand our business, further bolstering the region's economy

*Alexandre Chaves,  
president of the  
Commercial and  
Business Association of  
Santarém.*



**R\$ 378.7** million in purchases  
from local suppliers

Materials: **R\$ 347.8 million**

Services: **R\$ 30.9 million**

*Data from January to June 2025*





## Prioritizing job creation in Pará

*Professionals from Western Pará municipalities comprise over 85% of our workforce, underscoring our commitment to local development. Valuing the personal and professional growth of our employees is an integral part of our sustainable mining practices.*

# 6,956 professionals

- **1,640** employees and **5,316** outsourced
- **85.4%** of employees are from Pará

### 85.4% EMPREGADOS PRÓPRIOS SÃO DO PARÁ:

- |                          |                    |
|--------------------------|--------------------|
| • <b>469</b> Santarém    | • <b>98</b> Óbidos |
| • <b>423</b> Oriximiná   | • <b>8</b> Faro    |
| • <b>308</b> Terra Santa | • <b>94</b> Outros |

*Data from June 2025*



“

I am constantly learning, aiming to add value, grow, and prove that there is no age limit to building a professional career; all it takes is determination and a desire to learn

*Rosalba Sena,  
quilombola from the  
Boa Vista community*

## DIVERSITY WITH APPRECIATION FOR PROFESSIONALS 40+

Rosalba Lúcia dos Santos Sena, 55, a Quilombola from the Boa Vista territory, exemplifies our diversity and inclusion initiatives. She joined MRN through the “Open Doors” program, which provides exclusive positions and career advancement opportunities for quilombolas and riverside communities.

Rosalba is part of the growing group of professionals over 40 who, with their experience and maturity, strengthen our growth. Currently, **over 60% of our own employees are over 40.**

## MORE THAN 5,400 TRAINING PARTICIPANTS

In the first half of 2025, continuing education initiatives for our employees engaged 5,432 participants, encompassing training and professional development across all levels.

In partnership with the Interstate Center for Social Studies (Cesi), a new cycle of training programs focused on improving educational attainment, free courses, and professional qualifications will begin in the second half of 2025, with 140 openings for community members. Civil firefighter training will also be offered, with an additional 30 openings.

## WOMEN READY FOR LEADERSHIP

In August 2025, we launched the second edition of the Lidera Mulher project, designed to foster female participation in leadership positions through targeted training and a robust support network. The previous edition, a key component of our Diversity and Inclusion Program, trained 600 women, including employees, contractors, and guest employees.

The proportion of  
women in MRN's  
workforce 10.5% to

**12,8%**

in 2024





# Seeds of the Future: transforming through traditional knowledge



## Beneficiaries:

- 43 families from Boa Nova and Saracá..



## Actions:

- Training, support for organizing collector networks and accessing new markets, in addition to the purchase of seeds for the MRN Forest Nursery.



## Investment in training:

- R\$ 80,000

*Leveraging Amazonian Flora Knowledge to Generate Income and Opportunities for Seed-Collecting Families in Western Pará*

In the Boa Nova and Saracá communities, located on Lake Sapucaá (Oriximiná), seed collectors are organizing into networks to enhance the value of traditional knowledge and expand the market for native seed species

This initiative is being carried out in partnership with the Rural Producers' Cooperative of the Jirau Environmental Observatory (Coopprojirau), the Trombetas and Sapucaá Communities Association (ACOMTAGS), and Redário, which connects groups of seed collectors throughout Brazil.

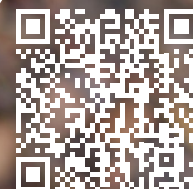
“

*The legacy we're building isn't just the income flowing into communities, but the very seeds we collect – seeds that will ensure a future for reforested areas, benefiting not only the community but our entire planet.*

*Josineide Castro, resident of the Boa Nova community and seed collector*



**Watch the Seeds of the Future web series**





# Sustainable development with preservation

*At Lago Maria Pixi, 73 families participate in training focused on food security and income generation*

Riverside communities from four communities along Lake Maria Pixi participated in workshops, courses, lectures, and technical visits to foster income generation by combining local knowledge with forest preservation.

The initiatives include support for family farming, agroforestry system management, and community-based tourism, meeting the socioeconomic assessment prepared in partnership with the Trombetas and Sapucaá Glebas Communities Association (ACOMTAGS) and the consulting firm Florestas Engenharias.

**R\$ 317,000**

invested in training at Lago Maria Pixi

**73**

families from the communities of São Tomé, São Sebastião, São Francisco, and Espírito Santo

**R\$ 209,400**

invested in the project, reaching the Alema, Jauaruna, Urubutinga, and Redobra communities. Data from the first half of 2025.

*Data from the first half of 2025*



# Honey is a source of income in Terra Santa

Led by MRN in partnership with the Terra Santa City Hall, the Meliponiculture Support Project has generated income for 25 families in the municipality. In 2025, 30 training sessions, meetings, and technical visits were conducted to strengthen production and expand the sale of hives, honey, and honey products, through proper management of stingless bees.



# Sustainable production support benefits 69 families

*With investments exceeding R\$ 721,000 in 2025, we encourage productive autonomy through environmentally friendly practices.*

Promoting sustainable development alongside income generation is the core principle guiding our Support for Agroforestry Systems (SAFs), Support for Family Farming, and Support for Fish Farming projects. These initiatives are conducted by MRN as part of environmental conditions fulfilled with communities in Western Pará

## SUPPORT PROJECT FOR AGROFORESTRY SYSTEMS (SAFS)

Trains farmers on sustainable soil management, forest preservation, and income generation.

- **Activities: 58 initiatives**, including courses and technical visits
- **Communities served:** Boa Nova, Saracá, Casinha, Camixá, and Lago Batata



## SUPPORT FOR FAMILY FARMING

Orientação técnica com foco na cadeia produtiva da mandioca e de culturas como feijão, melancia, hortaliças e animais de pequeno porte.

- **Activities: 14 initiatives**, including courses, technical visits, and participation in fairs
- **Community served:** Ascensão - Lago Sapucaá, in Oriximiná
- **553,300 Investment** in SAFs and Family Farming Support projects.



## SUPPORT FOR FISH FARMING

Professional training, infrastructure, and technical assistance for small-scale fish farmers.

- **Activities: 40 initiatives**, including guidance, meetings, and technical visits
- **Communities reached:** Lagos Taramã, Acapuzinho, and Bacabal
- **167,800** This is the **investment** in the Fish Farming Support project.



Data from the first half of 2025

“

Through the MRN project, our products are now being packaged. We've even earned a seal from our community. Product packaging plays a vital role, from protecting the product to ensuring consumer comfort. This project has significantly contributed to improving my life, my family's, and our community's"

Ana Lúcia de Menezes, resident of the Ascensão community and participant in the Family Farming project.



43

families were served in the Ceramics and Biojewelry axes of PEAP.

## Income that comes from the wealth of the forest

Chestnut shells, wood shells, and plant fibers are transformed into income for quilombolas participating in the Environmental and Heritage Education Project (PEAP), an environmentally sound initiative.



Artisans receive ongoing training in the production of biojewelry using natural and renewable materials from the Amazon rainforest. They also learn ceramic techniques to create utensils and decorative objects from local clay.

Through June 2025, residents of the Boa Vista quilombo participated in 17 PEAP training sessions, strengthening income generation and cultural appreciation.





# Environmental education reaches 27 communities

*Educational and awareness-raising activities for environmental conservation benefit communities in Oriximiná and Terra Santa*

Topics such as climate change, biodiversity loss, pollution, and environmental stewardship guided the activities of the Environmental Education Project (PEA) in 2025. By June, 134 educational and awareness-raising initiatives had been conducted across 27 communities in western Pará.

The PEA, a result of a commitment made during the licensing process, promotes understanding of the environment and its interrelationships, reinforcing the importance of environmental conservation, the sustainable use of natural resources, and improving quality of life. This year, community members also participated in workshops on sustainable agriculture and recycling, expanding their practical knowledge and environmental awareness.

**R\$ 721,900**

in investments  
in the PEA in the  
first half of 2025



“

*This is incredibly important for development, especially for sustainable agriculture, which promotes growth without harming the environment. I'm confident the project will enhance our capabilities and help generate new income.*

*Renan Almeida Godin, from the Alema community, in Terra Santa, served by the PEA.*



# Quilombola and riverside education: supporting learners from childhood to higher education

*Social responsibility programs provide uniforms, materials, food, transportation and scholarships*

For over two decades, we have supported the formal education of children, young people and adults in Western Pará, through the Basic Education Support Programs (PAEB) and Higher Education Support Programs (PAES).

**In 2025, the programs received R\$ 2 million in investments.**

With PAEB, students receive uniforms, teaching materials, meals (breakfast, snacks, and lunch), school supplies, and river and ground transportation, ensuring they have the conditions to attend school regularly.

PAES offers a monthly scholarship for in-person and distance higher education courses, as well as annual airfare and river travel for family vacations when the course is offered in other cities.

## PAEB

112 students served from the communities of Boa Vista, Alto Trombetas II, and Lagos Ajudante and Batata

Investment:

**R\$ 1.8 million**

## PAES

69 students from the Boa Vista, Alto Trombetas I, and Alto Trombetas II communities

Investment:

**R\$ 189,700**





# Quilombo project delivers healthcare to remote communities

*Through June 2025 over 6,900 river health services were provided to Quilombola communities of Alto Trombetas 1*

Reaching locations farther from urban centers, the Quilombo Project boat brought healthcare to communities in the Alto Trombetas 1 quilombola territory in Oriximiná.

This monthly initiative strengthens basic healthcare by providing medical appointments, exams, medication distribution, social assistance, and educational lectures focused on health and the environment

## SERVICES PROVIDED IN THE FIRST HALF OF 2025

**968** medical appointments

**185** procedures performed

Over **39,000** medications distributed

**2,046** laboratory tests requested

**3,977** nursing interventions

3 GOOD HEALTH AND WELL-BEING





# Combating malaria is a priority in the region

*For over 25 years contributing to the fight against and control of malaria, an endemic disease in the Amazon*

We maintain initiatives to reduce infant and adult mortality from malaria, which is highly prevalent in the Amazon region. This work is carried out through the Malaria Control Project, which is the result of environmental conditions met by the company.

More than  
**100**  
families  
in communities  
benefited

**227**  
properties visited

**R\$ 76,100**  
invested

Data from the first half of 2025





# Strengthening protection for children and adolescents

*Resources support actions by Municipal Councils for Children and Adolescents in Terra Santa, Faro and Óbidos*

Citizenship, sports, culture promotion, and health projects are some of the initiatives carried out by the Municipal Councils for Children and Adolescents (CMDCA) of Terra Santa, Faro, and Óbidos, supported by our R\$ 90,000 grant in 2025.

**2,048**  
children and adolescents benefited from these projects.

As part of our social responsibility initiatives, these funds prioritize the protection of children and adolescents at risk and in situations of social vulnerability.





“

*I've always loved sports, and when I discovered an opening, I decided to join. I chose volleyball, but I enjoy playing everything. The interaction with my teammates is fantastic, and the teacher is excellent; she always helps me when I need it.*

*Laysa Soares, 12 years old, resident of Terra Santa and volleyball player.*

## Sports and culture projects foster dreams

*Children and youth from communities and municipal centers of Oriximiná, Faro and Terra Santa gain access to free sports and music classes*

Becoming a professional athlete or a renowned classical music artist is a dream for many children and adolescents participating in the Esporte na Cidade (Sport in the City) and Orquestra Maré do Amanhã (Tomorrow Tide Orchestra), developed with our support.

The project reaches 300 children and young people with volleyball, futsal, basketball, and handball lessons, and is partnered with the Peito Aberto Social Organization.

At Orquestra Maré do Amanhã, 110 students from two schools of Oriximiná, participate in classical music lessons on viola and violin.

**R\$ 480,000**

**invested in the Esporte na Cidade and Orquestra Maré do Amanhã projects.**

**410**

**children and young people reached**

*Data from January to June 2025*





# Continuous, transparent dialogue with communities

*In the first half of 2025, 392 community members participated in engagement actions across Oriximiná, Faro and Terra Santa*

Ongoing dialogue with riverside communities, quilombolas, and representative associations forms a core pillar of our operations. Through June 2025, we conducted 27 meetings with residents from 12 communities, always guided by respect and transparency.

This close relationship enables the continuous improvement of our socio-environmental and social responsibility initiatives, reinforcing our Social License to Operate (LSO).



## CONTINUOUS, TRANSPARENT DIALOGUE WITH COMMUNITIES

1 (AT1) Quilombola territory, located in the indirect area of influence of the Novas Minas Project (PNM).

Since 2024, we have conducted 18 meetings with over 450 participants to collaboratively develop actions addressing the PNM's environmental constraints and to continue voluntary socio-environmental investments in the territory.

**R\$1.2**  
**million**  
**invested**  
in social projects in  
AT1 in 2024.









# Project expands drinking water supply in the region

*Families from communities in the Sapucaá and Batata Lakes region of Oriximiná receive improvements to their water infrastructure*

To address the challenge of expanding drinking water supply in the Amazon region, we maintain the Microsystems and Artesian Wells Project.



**R\$1.8**  
million  
is being  
invested in  
the program  
by 2025.

The actions include improving community infrastructure for water collection and distribution, with the construction, renovation, and maintenance of microsystems and artesian wells.



**339**  
families

live in the areas covered by the program, in the communities of Lago Sapucaá and Lago Batata.



## CONSERVATION OF TURTLES

The Pé-de-Pincha project, carried out in partnership with the Federal University of Amazonas (UFAM), involves 31 communities and promotes the participatory management of species such as turtles, tracajás, pitiús, and irapucas. With an investment of R\$643,600 through June 2025, 1,547 community members participated.



## SAFE NAVIGATION

With the Leme Project, we raise awareness and guide riverside communities on river navigation practices, reducing the risk of accidents and preserving the safety of people and vessels.

The initiative reaches five communities near Porto Trombetas. By June 2025, 2,330 people had been reached by the initiative.



# Social technology brings treated water to communities

*Pilot project transforms well water into treated water, available on tap and ready for consumption*

In partnership with the startup Água Camelo, we implemented a pilot project in the Boa Esperança Community, in Lago Batata, Oriximiná, Pará.

The system transforms well water into treated, ready-to-drink water using filters and solar pumping.

The investment is R\$146,200. The second phase will begin in the second half of 2025, expanding the benefit to more families.





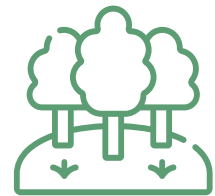
# Over 443,000 trees planted in six months

*Through planting, we advance our reforestation program using native species seedlings*

By 2025, we had reforested 8,000 hectares, planting 443,000 seedlings of 84 native tree species, all produced in our Forest Nursery, including Itauba, Cumarú, Jacaranda, and Copaiba.

In total, 350.94 hectares were reforested in the first six months of the year, expanding the ecological restoration process in previously mined areas.

Our Degraded Areas Recovery Program includes seedling production in the Forest Nursery, the recovery of fauna and flora species, and the contribution to technical knowledge on ecological restoration in the Amazon and to science.



**285,243**  
seedlings of 81  
native species  
produced at the  
MRN Nursery

*Data from January  
to June 2025*







## DID YOU KNOW?



Our licensed area occupies **2.1% of the total area of the Saracá-Taquera National Forest (Flona) and the Trombetas River Biological Reserve (Rebio)**, which together total over **849,000 hectares**. Of the 11,939 hectares used in our operational area, **8,052 hectares (67%) are in various stages** of reforestation.

**R\$ 2.7 million** was transferred to the Chico Mendes Institute for Biodiversity Conservation (ICMbio), under an agreement from 2024 to June 2025, to support inspection and conservation activities in the Flona and Rebio.



# A benchmark reforestation model in the Amazon

*Scientific publications recognize our practices as a model for ecological restoration in mined areas*

National and international researchers highlight the MRN reforestation program as a model for tropical forest restoration.

In the article “Restoring Tropical Forests on Land Mined for Bauxite: Lessons from the Brazilian Amazon,” John Parrotta and Oliver Knowles highlight the diverse planting of native species and careful soil preparation as success factors.

In the book “Herpetofauna of the Central Amazon - Studies in the Saracá-Taquera National Forest,” researchers from nine educational institutions report the return of reptiles and turtles to our reforested areas and the successful ecological restoration process.

“

*Many of the lessons learned at this site are applicable to improving mine site rehabilitation and forest restoration programs around the world.*

*Excerpt from the article “Restoring Tropical Forests on Land Mined for Bauxite: Lessons from the Brazilian Amazon,” by John Parrotta and Oliver Knowles.*

“

*Although the removal of vegetation from the plateaus imposes the temporary loss of these environments, environmental restoration activities have functioned as a conservation strategy, as they have ensured the return of these species to their normal habits in these areas.*

*Excerpt from the book “Herpetofauna of the Central Amazon - Studies in the Saracá-Taquera National Forest”, organized by Sérgio Augusto Abrahão Morato, Guilherme Nunes Ferreira and Michela Rossane Cavilha Scupino.*

# Reforestation Stages

## Beginning 2 years after vegetation removal

### Before mining

- Forest inventory to characterize the flora; vegetation suppression with rescue of fauna and flora species and topsoil and sterile soil stock; reintegrated into reforestation.

### After mining

- Reconstruction of the land with the return of topsoil and sterile soil, followed by the planting of seedlings of native species produced in the MRN Nursery.

### Monitoring

- System with scientific parameters allows comparison of the evolution of the restoration process with the reference ecosystem – the Saracá-Taquera National Forest.

*Community members from the region participate in the process by supplying seeds and in activities at the MRN Nursery and planting seedlings, contributing with traditional knowledge*

## Respect for Biodiversity

Our reforestation program integrates actions designed to contribute to zero net biodiversity loss by 2030, in line with the UN Sustainable Development Goals (SDGs). Operating within the Amazon – one of the world's most complex ecosystems – makes biodiversity a paramount priority. New policies and tools are actively being developed to achieve this goal.





# Fauna and flora monitoring leads to species discovery

*Ongoing programs expand species knowledge and ensure return to natural habitat*

The rescue of flora species from areas slated for mining, for later return to their natural habitat during the reforestation phase, has enabled environmental conservation and contributed to science through unprecedented species records.

Rescued wild animals are sent to our Wildlife Triage Center (Cetas) at MRN. Once rescued, flora species undergo triage and are sent to the Forest Nursery, which includes an Epiphyte Nursery where epiphyte species are reproduced and cataloged in a scientific collection.

*Data from the first half of 2025*





*Bromelia saracataquerensis* registrada na ciência de forma inédita pela equipe da MRN

## Five species of reptiles and amphibians discovered

- Reptile of the genus *Mesobaena* (Squamata: Amphisbaenidae);
- A species of lizard of the genus *Alopoglossus* (Squamata: Alopoglossidae);
- Two species of amphibians of the genus *Rhinatrema* (Amphibia: Gymnophiona); and
- A species of *Microcaecilia* (Amphibia: Gymnophiona: Siphonopidae).

## What are epiphytes?

These are plants that live in trees and rely on them for survival, growing from the trunk to the crown. Some of the best-known examples include orchids, bromeliads, anthuriums, and calla lilies.



**19 new species registered**



# Pioneering system generates sustainability indicator

*New model measures reforestation effectiveness and becomes a scientific reference in the Amazon*

We developed a pioneering ecological restoration monitoring system based on international parameters from the Society for Ecological Restoration (SER). This model was built in collaboration with researchers from the Chico Mendes Institute for Biodiversity Conservation (ICMBio) and the Brazilian Institute of the Environment and Renewable Natural Resources (IBAMA).

The new Ecological Restoration Monitoring Program (PMRE) was implemented in 2024, adopting six attributes to classify the results of the reforestation process. Each attribute is scored based on a comparison with the reference ecosystem.





## Restoration Rating Attributes



### Absence of threats:

Considers degradation factors and unwanted animal and plant species..

### Physical conditions:

Considers the physical and chemical characteristics of the substrate.

### Species composition:

Considers data on the faunal and floral communities present in the areas.

### Structural diversity:

Considers soil cover and forest structure.

### Ecosystem functionality:

Considers the demographic processes of planted seedlings, nutrient cycling, and ecological interactions.

### External exchanges:

Based on the percentage of forest cover.

# Results indicate success of reforestation

The first results of the new PMRE show that five reforested plateaus — Almeidas, Aviso, Bacaba, Papagaio, and Periquito — already exhibit ecological characteristics very similar to the original ecosystem.

This demonstrates that the restoration work in mined areas is ensuring real conditions for the conservation of Amazonian biodiversity.

Due to its unprecedented nature and recognized scientific parameters, the PRME also generates knowledge for restoration projects in complex ecosystems, such as the Amazon.

## Areas assessed with the new PMRE

# 3,050 hectares

reforested on the Almeidas, Aviso, Bacaba, Papagaio, and Periquito plateaus, where operations ceased in 2021.





## Participatory water resources monitoring

*With community member participation, water quality monitoring is continuous, with analyses reported to control and environmental agencies*

To enhance transparency in our operations, we rely on the assistance of community members in collecting and monitoring water quality and availability in the 10 river basins where we operate.

# 226

collection points are maintained for water quality analysis.

*Analyses have maintained a compliance rate of over 90%, with no deviations that could result in significant environmental impacts. Data is also shared with communities.*

# 41,636

*water analyses were performed on springs, streams, rivers, and effluents in the first half of 2025*





# Results shared with communities

*In addition to monitoring sample collections, local community members receive a technical report on the analysis results, which is shared in meetings with our teams.*

Communities receive an annual schedule with scheduled collection dates, as well as an official letter at least one month in advance, informing them of the date, collection points, and scheduled activities.

## Air quality care

Among our sustainable development practices, we monitor air quality and implement measures to mitigate dust dispersion in mining areas and mine access routes.

- 14 points monitored
- 504 samplings
- Results did not exceed legal limits

*Data from January to June 2025*





# Sustainable industrial and urban waste management

*Over 1,900 tons of waste recycled in 2025*

All waste generated in our operational areas, totaling 1,921 tons, was designated for recycling or reprocessing in the first half of 2025. The waste is sent to our Industrial Waste Center (CRID), where it is segregated and stored for final disposal.





## 747 environmental education actions

- Discussions on waste management in operational areas, local businesses, and schools in Porto Trombetas.
- Environmental inspections at waste-generating locations.
- Visits to our waste centers.
- Lectures for residents of Porto Trombetas and the community.
- Recycling blitz.
- Specific training on urban and industrial waste management.

*Source: Data from  
the first half of 2025*

# More than 425 tons for composting and recycling

*The production of natural fertilizer  
and the reuse of waste help extend  
the useful life of landfills*

Proper waste disposal also extends to urban waste generated in the Porto Trombetas district (Oriximiná, Pará). Through June 2025, we collected 7,862 tons of waste, which was sent to our Urban Solid Waste Treatment Center for further disposal.

To raise community awareness about proper urban waste disposal, we hold lectures, recycling blitzes, and promote visits to waste centers.





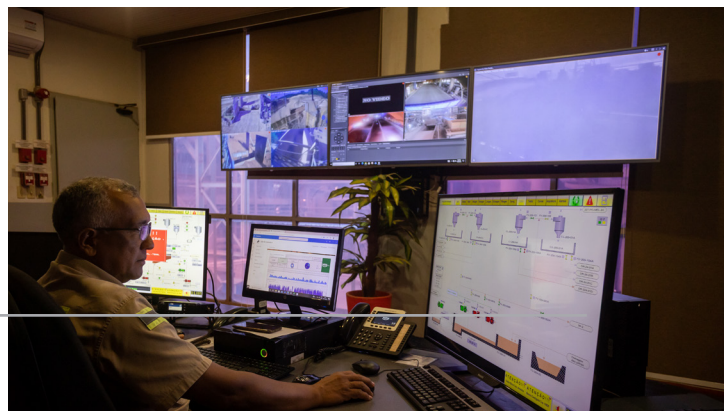
# Adopting global standard for tailings management

*By adopting international standards, we have enhanced transparency and improved the Waste Management System*

We continue to invest in improving the management of our tailings disposal facilities, reinforcing operational safety, environmental protection, and respect for local communities.

Beyond complying with Brazilian standards, we have made significant progress in implementing the Global Industry Standard for Tailings Management (GISTM), an initiative of the United Nations Environment Programme (UNEP), the Principles for Responsible Investment (PRI), and the International Council on Mining and Metals (ICMM).

With GISTM, we have enhanced the governance of our Tailings Management System, which includes continuous risk monitoring, the adoption of modern technologies, team development, and transparency.



## Transparency

As part of our commitment to safety and social and environmental responsibility, we launched a new portal in 2025 to share updated information about our tailings disposal facilities in Saracá Leste and Saracá Oeste. This initiative not only meets the Global Industry Standard for Tailings Management but also reinforces the transparency of our operations by presenting data such as risk and potential damage classifications, emergency plans, and safety assessments. It further represents our continued investment in innovation and care for the territories where we operate.

**View the content here:**



# Seminars and simulations ensure transparency

*Actions ensure communities remain informed about the Emergency Action Plan for Mining Dams (PAEBM)*

Residents of the Boa Vista, Saracá, and Boa Nova communities participated in activities under the Emergency Action Plan for Mining Dams in the first half of 2025.

**77 people attended the three orientation seminars held through June 2025.**

Although no communities are located within the dam Self-Rescue Zones, these seminars help to integrate and keep surrounding residents informed. Activities included visits to our tailings system and the Geotechnical Monitoring Center.

In May 2025, we conducted a hypothetical internal simulation exercise, bringing together employees, the Oriximiná Municipal Civil Defense, and external auditors.



## Inspections and surveys of the MRN Reject System

**348**

inspections carried out by technical teams and sent to the National Mining Agency (ANM).

**29**

Regular Safety Inspection Reports submitted to ANM.  
Data from the first half of 2024

**Current Stability Conditions Declarations for MRN's 27 tailings ponds and two sediment dams.**





Mineração Rio do Norte S. A.  
Rua Rio Jarí s/nº Porto Trombetas  
CEP 68275-000 Oriximiná - PA